

Avoid paying too much tax

You will need a Danish tax card if you work in Denmark.

- 1 To get a tax card you have to complete and submit **form 04.063** which you find at www.skat.dk/forms in five different languages.
- 2 When you submit the completed form, you should also attach copies of the following:



Photo ID, such as passport or ID Card



Marriage certificate if you are married (family certificate if you are a Swedish citizen)



Work permit if you are a citizen from outside the EU, Iceland, Liechtenstein, Switzerland or Norway

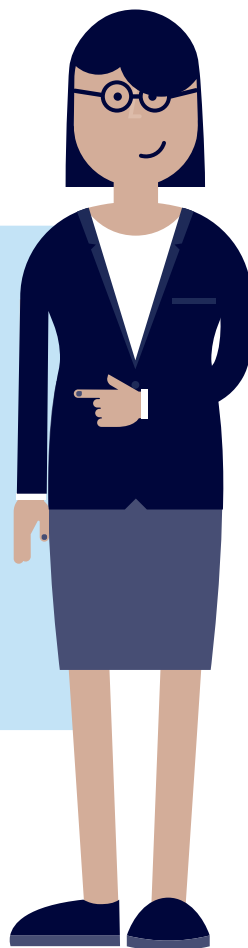


Employment contract (signed by your employer)



Please see www.skat.dk/workingindenmark for more information about tax in Denmark in different languages, or scan the QR code.

Call us on (+45) 72 22 27 80 if you have any questions about getting a tax card – we're here to help you.



Avoid paying too much tax

You will need a Danish tax card if you work in Denmark.

- 1 To get a tax card you have to complete and submit **form 04.063** which you find at www.skat.dk/forms in five different languages.
- 2 When you submit the completed form, you should also attach copies of the following:



Photo ID, such as passport or ID Card



Marriage certificate if you are married (family certificate if you are a Swedish citizen)



Work permit if you are a citizen from outside the EU, Iceland, Liechtenstein, Switzerland or Norway



Employment contract (signed by your employer)



Please see www.skat.dk/workingindenmark for more information about tax in Denmark in different languages, or scan the QR code.

Call us on (+45) 72 22 27 80 if you have any questions about getting a tax card – we're here to help you.

